



System Specifications

Dance Designer is a Windows-based program that runs on the XP, Vista and Windows 7 operating systems.

Minimum Requirements for PC and Mac:

- Microsoft Windows XP (SP3) Windows Vista (SP1) 32-bit or
Or Windows 7 32-bit (64-bit OS must be run in compatibility mode)
- Microsoft DirectX 9 or later
- Microsoft.net 3.5 or later version
- Intel Pentium Dual Core 1.60Ghz processor minimum; Recommended:
2.0Ghz
- 1.0 MB of RAM minimum-- Recommended: 3.0 GB of RAM
- Minimum screen resolution: 1280 x 800 – Recommended 1920 x 1080

Dance Designer can also be run on a Mac OSX 10.5 computer using:

- Apple Boot Camp (<http://www.apple.com/macosx/features/bootcamp.html>)

System Notes:

- Recording audio requires dedicated Windows-compatible sound card, microphone and speakers
- Recording video requires a USB Video Camera



Installing Dance Designer

Before You Begin the Installation Process

- Make sure your computer has an Internet connection.
- Make sure you have the latest service pack and critical updates for the version of Windows on your computer. For more information about Microsoft Update's, visit the following Microsoft Web site: <http://update.microsoft.com> (To use this site, you must be running Microsoft Internet Explorer 5 or later).
- Have your security or firewall software allow Dance Designer access to the Internet.
- Turn off all other programs running on your computer.

To install Dance Designer:

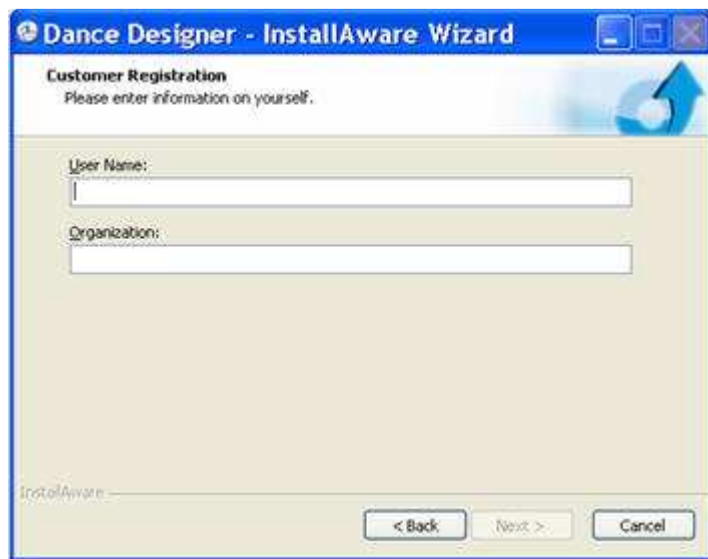
1. Download Dance Designer from ChoreoPro.com.
2. Double-click on the *Dance Designer zip* folder.
3. Double-click the *DanceDesignerSetup.exe* file.
4. Click **Next** to start the wizard.



4. Read the License Agreement and select the check box to accept the terms.



5. Click **Next**.
6. Type your User Name and Organization (not required) and click **Next**.





7. If you want to install Dance Designer in the default destination folder (recommended), click **Next**.

Or, click **Change** and browse to the folder where you want to install the program.



8. Type a new name for the program folder or accept the suggested name.
9. Select the option to choose who will be able to use the application and click **Next**.





10. If you are satisfied with the wizard setup, click **Next** to begin the installation.

Or, click **Back** to change the settings.

Or, click **Cancel** to exit the installation.



11. Click **Finish** to close the wizard.



The Activation window appears.



You have three options:

- Activate Dance Designer – Used once you have purchased the program and received an email message with a license number.
- Try Dance Designer – Allows you to use the free trial for 15 days
- Buy Dance Designer – Takes you to the choreopro.com store to purchase the program
- Select your choice and click **Continue**.

Customer Support

For technical support and customer care, please go to: ChoreoPro.com.

Choreo Technology, LLC
PO Box 5700
Los Alamitos, CA 90721
562.735.3150